

Canvas: Unstretched canvas. Preparing some unstretched canvases for the artists to use.

EQUIPMENT: What you will need



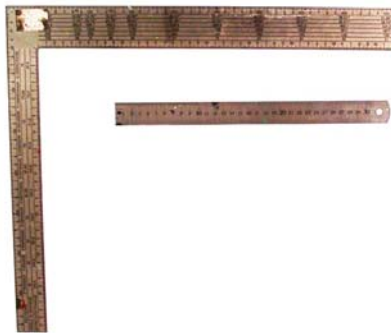
Template of painting size



Roll of canvas



Sharp scissors



Right Angle measure



Tape measure, ruler



Sharp pencil

Safety: How to Stay Safe

Always keep your sharp scissors in a safe place when not using.
Make sure you put all tools away when done.

Prepare unstretched canvas

Set up canvas

Unroll a section of canvas to draw the templates onto.

- Make sure you have your tools ready.



Measure in from the edge to where the painting will start

Use the ruler to measure in 2cm from the bottom edge of the canvas.

- Mark off the same measurement all the way along the canvas.
- Use a ruler to join the marks into a straight line.

This line is where the paint will start on the canvas and where the edge is to roll over the stretcher.



Measure how tall the area to be painted will be

Use the ruler to measure the height you want each painting on the canvas to be. Measure up the canvas roll from the line you just drew.

- Mark off this width all the way across the canvas.
- Make a line to join up these marks. This is how tall each of the painted surfaces of the canvases will be.



Measure and mark another 2cm above the height. Draw that line across the whole width of the canvas. This is the top edge which you will cut along.

Measure the width of each canvas

Measure and rule up each side of the canvas to make a line 2cm in from the edges.

- Make these lines come up the side as far as your top edge (height) line.



Measure the width to make each piece of canvas

Start from one side and measure across the canvas from the line you just drew up the side. This will be how wide your painting surface will be.

- Mark like this along the length of the canvas in a couple of places at least.
- Join your marks to make a line which goes from the bottom to the top line.

Leave cutting line between each piece

Once you have drawn the line for the width you must measure out 2 cm from there to make an outside edge for the canvas.

- This is the line you will cut up.

Now you should have a rectangular or square shape which is drawn 2 cm inside the larger rectangular or square shape.



Keep working across the width to the end of the canvas

Continue marking the width across and ruling the lines to complete the inside shape, which is the size and shape of the painting surface, and then the outside shape, which includes enough of a border to turn down over the stretcher.

You should be able to make several medium sized canvases out of each row.

TIPS: Canvas on a roll

When you are making a canvas up onto a stretcher always cut across your roll of canvas from one side to the other. Do not keep cutting up into the roll or you will get a lot of waste pieces in funny shapes.

If you have some left over from the strip:

- Save it for making colour or paint tests on
- Keep it handy for children or others to practice on
- Make small paintings for sale at the markets.

An exercise using maths to calculate measurements

Your job is to look after the art centre studio and provide materials to artists as they need them.

One of your main tasks is to cut from the roll some canvases of equal size, and hand those out to artists who need them.

- Keeping the sizes grouped together keeps the art centre paintings looking neat when they are hung together.

The roll of canvas is 2,300mm, 230 cm, or 2.3m. wide.
It is 50,000mm, 500cm, or 50m long.

You need to cut out 3 canvases all the same size. They must be less than 1m wide, and less than 900mm tall.

What size will each piece of canvas be?

$$\begin{array}{rclcl} 2.3\text{m} & \div & 3 & = & 76\text{cm} \\ \text{Roll width} & \div & \text{Number of canvases} & = & \text{single canvas width.} \end{array}$$

If each piece is 76cm (760mm) wide and 90cm (900mm) tall, what size is the surface area of each painting? (2cm in from each edge).

$$76\text{cm} - 4\text{cm} = 72\text{ cm (720mm)}$$

$$90\text{cm} - 4\text{cm} = 86\text{ cm (860mm)}$$

$$\text{The surface area} = 72 \times 86 = 6192\text{cm}^2 \text{ or } 61.92\text{m}^2$$

Each painted surface will be 72 cm wide and 86cm tall
The stretcher for each painting will be 72 x 86cm.